

# A Good News Story

Gerry Pageau, B.A.Sc., P.Eng., M.Eng.  
Process Engineer at HSPP since 1978



Gerry Pageau

1978 Graduated from the University of Waterloo with BAsC in chemical engineering. Started working at Canfor Howe Sound Pulp Division in technical department.

1980 Became registered professional engineer in province of BC.

1983 - 1986 Served as Canadian Pulp & Paper Association (CPPA) Pacific Coast Branch executive.

1985 Graduated with M.Eng in chemical engineering from UBC Pulp & Paper Masters Program.

1988 - 1992 Assistant Engineering Manager, Process Control for the \$1.3B rebuild of Howe Sound Pulp & Paper LP.

2007 - 2009 Member of Executive Council, Pulp & Paper Technical Association of Canada (PAPTAC)



Michael J. Bradley

Mike has been responsible for the Technology & Sustainability activities of a major BC pulp and paper producer for over two decades.

In 2000, he was a founding member of the Joint Solutions Process, the partnership between environmental groups and industry which ultimately led to the groundbreaking “Great Bear Rainforest Agreement”.



# Presentation material

- ▶ PDF copies of the presentation material will be available from:

[www.sunmoonstars.ca/elderu/](http://www.sunmoonstars.ca/elderu/)

Password is: *portmellon*

We will try to have each weeks material posted the day before the classes.



# Agenda for lesson 4

- ▶ Process review
  - Power & Recovery: How HSPP's cogeneration system makes steam, power and recycled chemicals.
- ▶ Maintenance of natural cycles
  - Industrial ecology: carbon, water, forest



# Agenda for lesson 3

- ▶ Mill Tour
- ▶ Dress like you are going for a hike:
  - Closed toe shoes, no high heels, boots best
- ▶ How to get there: map, carpool suggested
- ▶ What to expect at security and training centre
  - Entry to parking area
  - You will be given use of safety equipment such as hard hat, respirator, safety glasses and ear plugs.
- ▶ Yes, you may bring cameras



# Agenda for lesson 2

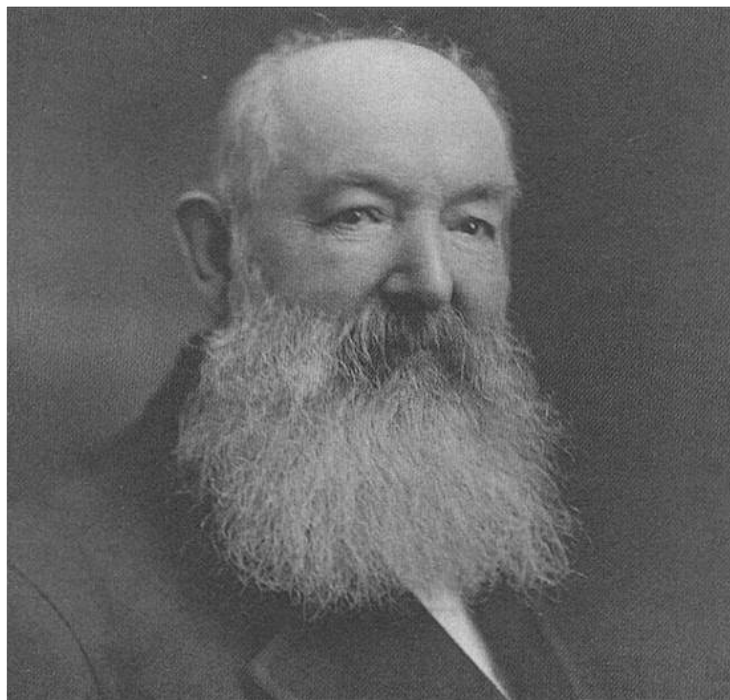
- ▶ Process review
  - How HSPP makes TMP Paper and Kraft pulp
- ▶ A sustainable development ecosystem?
- ▶ Sustainable forestry, forest certification, fiber traceability
- ▶ Great Bear rain forest



# Agenda for lesson 1

- ▶ Introduction of your two speakers – a quick biography and why we want to talk to you
- ▶ The markets for forest products & wood pulp
- ▶ Global issues
- ▶ What the customers want to know
  
- ▶ The history of Port Mellon : where we are coming from and where we are now – what the mill contributes to the Sunshine Coast community





Captain Henry  
Mellon

1840 – Born in Nottingham England

1854 – Went to sea aboard the sailing ship Chimera from Liverpool to Calcutta

1859 – Joined the Royal Navy in India. After serving, he joined the Dominion Steamship Line and reached Commodore–Captain status

1880 – Came to Canada, lived in Rapid City Manitoba then Winnipeg.

1886 – Came to Vancouver the year after “the great fire”

1908 – Built the mill in Port Mellon

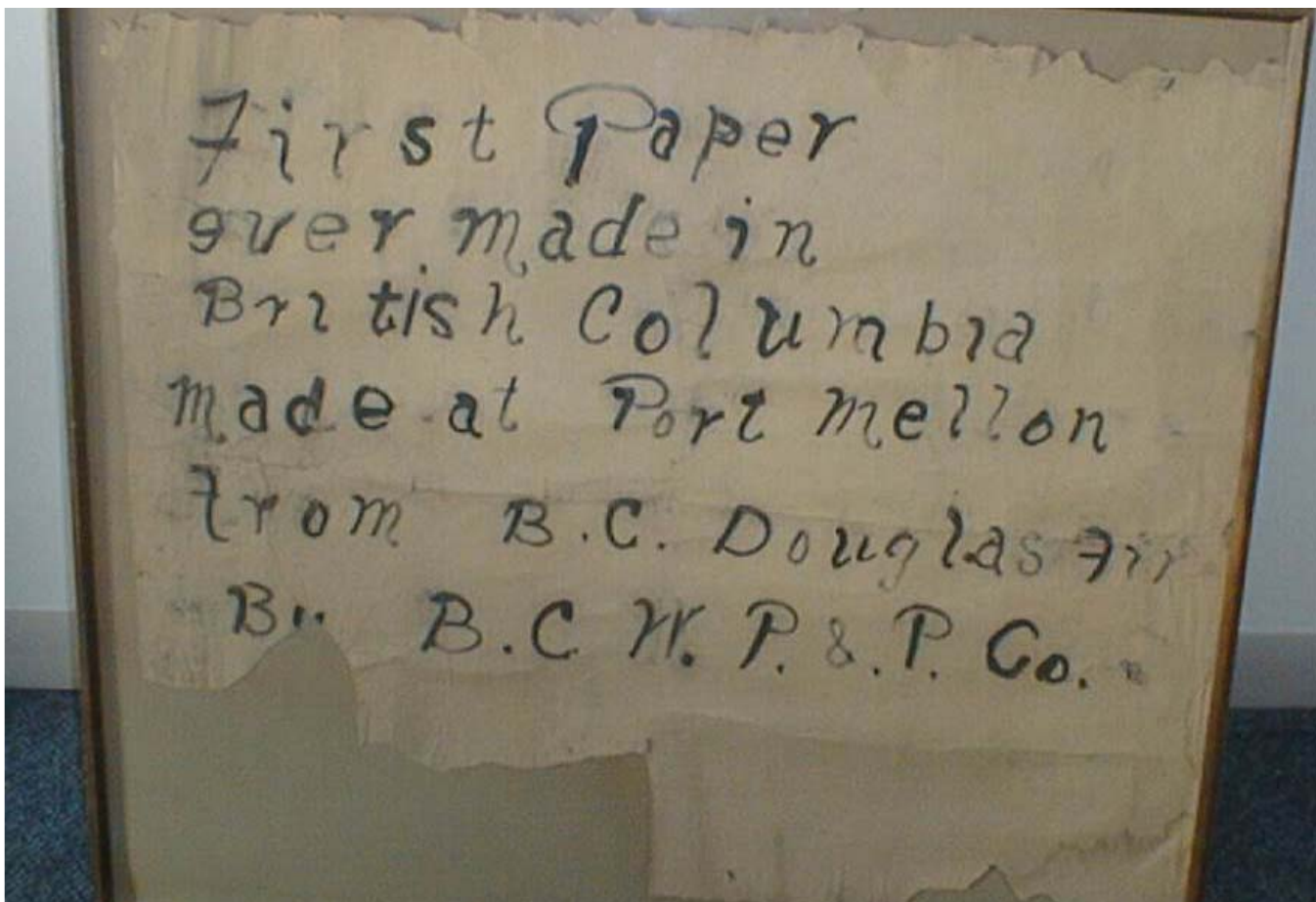
1916 – Died in Vancouver



## Oldest Wood Pulp & Paper Mill in BC



Note: a mill in Port Alberni started up 14 years earlier but made paper from rags, not wood. It failed after two years. Between 1909 and 1914, mills at Swansen Bay, Ocean Falls, Powell River and Woodfibre also started up.



## Pioneer Mills

British Canadian Wood Pulp & Paper Company  
Port Mellon, 2:30 pm Oct 14<sup>th</sup>, 1909

# A tough business

- ▶ 1908 – British Canadian Wood Pulp & Paper Co.
- ▶ 1916 – Rainy River Pulp & Paper Company
- ▶ 1920 – Western Canada Pulp & Paper Co.
- ▶ 1925 – Howe Sound Pulp & Paper Co. Ltd.
- ▶ 1927 – Vancouver Kraft Mills Ltd.
- ▶ 1935 – Port Mellon Operating Company Ltd.
- ▶ 1939 – Vancouver Kraft Corporation Ltd.
- ▶ 1941 – Sorg Pulp Company
- ▶ 1951 – Howe Sound Pulp Company (CANFOR)





## Aerial view of mill & town site in 1950s >>>

The mill which produced 130 tonnes/day of unbleached Kraft pulp was purchased by Canfor in 1951.



## The community of Port Mellon »»

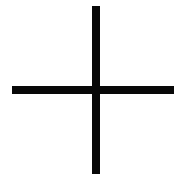
The Seaside Hotel was a popular vacation destination. Union Steamship stopped there until 1953 when road to Gibsons Landing was built. Last houses were removed in 1988



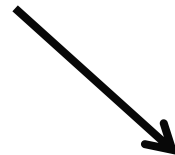
Aerial view circa 1987 >>>

600 tonnes/day bleached Kraft pulp  
High operating cost, minimal environmental controls

# 1988 – THE BIRTH OF A NEW COMPANY



Oji Paper Co., Ltd.





## The mill is reborn



Between 1988 and 1992 during a \$1.3 billion upgrade, virtually every major piece of equipment was replaced with state of the art technology. The result was a high efficiency mill with ISO 9001 product quality and ISO14001 environmental controls

# The mill changes hands in 2010

- ▶ Paper Excellence Canada Holdings Corporation
- ▶ A privately owned company owning seven mills in Canada.
  - HSPP, Skookumchuck & Mackenzie in BC
  - Meadow Lake Sask
  - Northern Pulp Nova Scotia
  - Prince Albert Sask (not operating)
  - Chetwynd BC (not operating)



# Green Transformation Program

- ▶ Power boiler upgraded from vibrating grate to fluidized sand bed to more efficiently and reliably burn bark and sawmill waste while reducing emissions.
- ▶ Improved energy generation results in additional green power (sales of 300 GWh in 2013) and cuts natural gas use by 6.5 million cu m/yr.
- ▶ Startup of the upgraded boiler was in 2011, the year HSPP achieved “net carbon neutral” status



# Major capital projects underway

- ▶ A new chloride removal plant to increase the mill chemical loop efficiency.
- ▶ Upgrade brown stock washing & oxygen delignification to increase wood yield, reduce bleaching cost and effluent treatment load.
- ▶ A second line of evaporators to allow better washing of pulp while increasing black liquor solids fired in the recovery boiler.
- ▶ Bleach plant Do stage conversion to MC
- ▶ Total investment over \$100 million.



# Progress since 1990

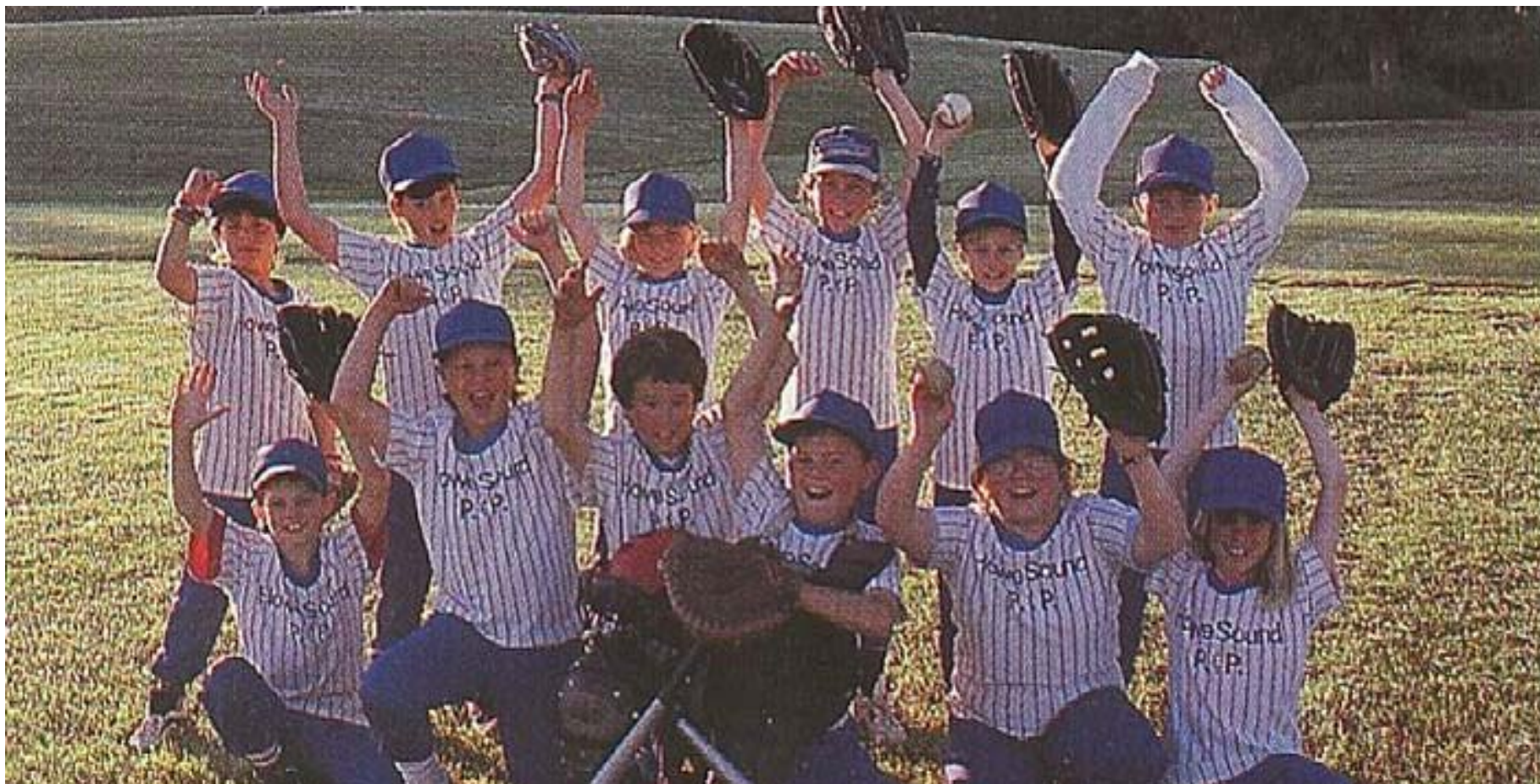
- ▶ Greenhouse gas emissions reduced over 50%
- ▶ Largest GHG reduction in the industry
- ▶ Reduced energy use per tonne over 40%
- ▶ Mill now supplies 80% of its energy needs from on site power generation
- ▶ Eliminated use of chlorine gas in bleaching
- ▶ Was first Kraft mill in North America to produce totally chlorine free bleached pulp
- ▶ Treated effluent has no measurable impact on water quality or fish in the Sound.



# Contribution to community

- ▶ 383 hourly & 120 staff employees > \$3MM/m
- ▶ Union wages range from \$28 to \$48/hr plus comprehensive benefits program
- ▶ Payroll has massive multiplier effect on coast economy supporting families, businesses and local governments
- ▶ Large apprenticeship program
- ▶ Over \$15MM/year spent locally
- ▶ \$2.2MM property taxes in 2014





## An important member of our community »»

HSP and its employees are major contributors to charity and community programs giving \$35k in 2014.

Rainy river  
upstream of  
mill  
looking  
North

